

HDCAM-SR Workflow Guide



CLIPSTER®

The advanced CLIPSTER DI workstation is the perfect solution for DI workflows. Benefit from CLIPSTER's wide range of applications to enhance your post production of film and broadcast projects. Apply the award-winning DVS system at a large variety of DI steps ranging from capturing to DCI mastering. Use CLIPSTER today to meet the challenges of the future, to realize DCI cinema projects even in 3D or for conforming and editing uncompressed 4K data or RAW files in real time.

By supporting Sony's HDCAM-SR™ technology CLIPSTER expands its format diversity and offers additional flexibility. For conforming, a batch capture list can be generated with CLIPSTER and the content from the HDCAM-SR VTR can be captured in double speed into uncompressed DPX file sequences by using HD-SDI dual link. These DPX file sequences can be color graded and delivered into various formats like a Digital Cinema Package (DCP).

CLIPSTER also enables users to generate DCI Masters with stereoscopic content coming from HDCAM-SR VTR's (dual-stream 3D). The DCI Mastering Wizard of CLIPSTER easily performs stereoscopic DCI Mastering process including interleaving, encoding into JPEG2000, encryption, and wrapping into MXF files in one step, all in high speed.

CLIPSTER 3rd Generation

Supported Workflow

Double-speed transfer
Stereoscopic 3D
All video frame rates including 1080/50p 60p

Applicable HDCAM-SR VTR

SRW-5800 with HKSR-5803HQ
SRW-5100 with HKSR-5103

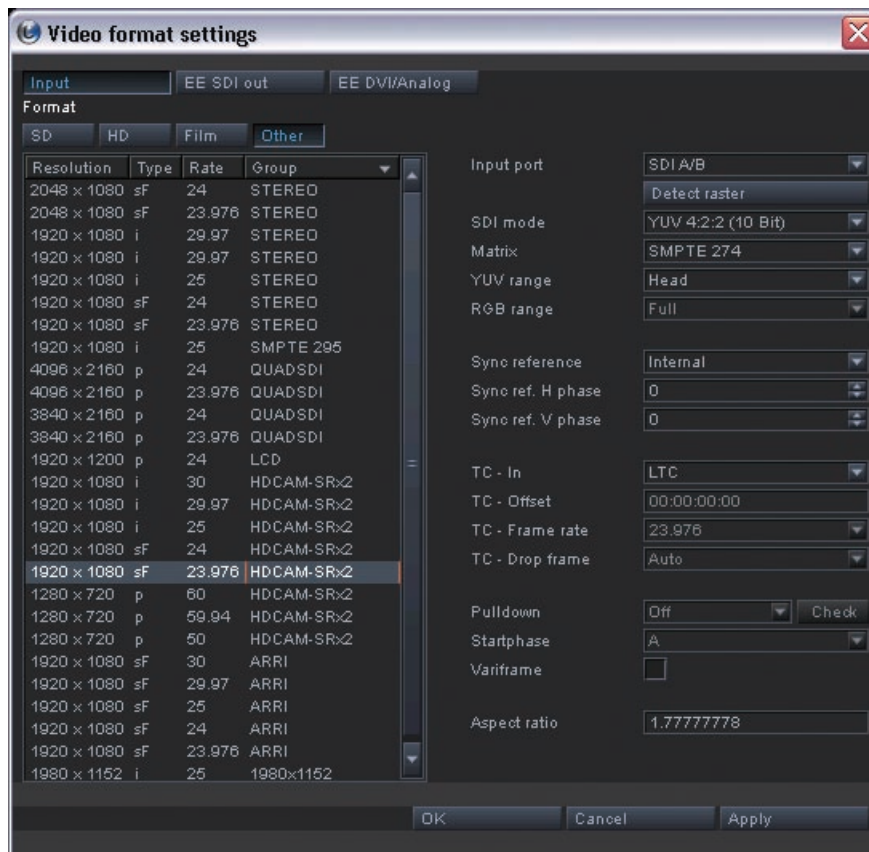
The HDCAM-SR specific features include:

- Capturing HDCAM-SR material directly into uncompressed RGB 4:4:4 10 bit file sequences (e.g. DPX, TIFF, TGA, etc.) via HD-SDI dual-link
- Capturing in double speed mode from HDCAM-SR VTR via HD-SDI dual-link
- Capturing of 3D content from HDCAM-SR VTR via HD-SDI dual-link
- Conforming and distributing of various formats of HDCAM-SR content
- DCI-Mastering in 2D and 3D of HDCAM-SR content



To capture material recorded at double-speed:

1. Ensure that the HDCAM-SR VTR is connected to CLIPSTER using a dual-link HD-SDI.
2. Set the HDCAM-SR VTR to 422DBL.
3. Load an edit decision list (e.g. EDL, FCP XML, etc.) into CLIPSTER and create a batch capture list.
4. From CLIPSTER, select the HDCAM-SR VTR.
5. From CLIPSTER, select 2x-DOUBLE in the input settings of the I/O tool.
6. Select a file format in CLIPSTER (e.g. DPX, TIFF, TGA, etc.)
7. Start the automated batch capturing process of CLIPSTER.
8. Further steps like color grading or DCI Mastering can be accomplished with the captured content.



Contact

DVS Digital Video Systems AG

Krepenstr. 8
30165 Hanover, Germany

Phone + 49 511 67 80 70

Website www.dvs.de

e-mail sales@dvs.de